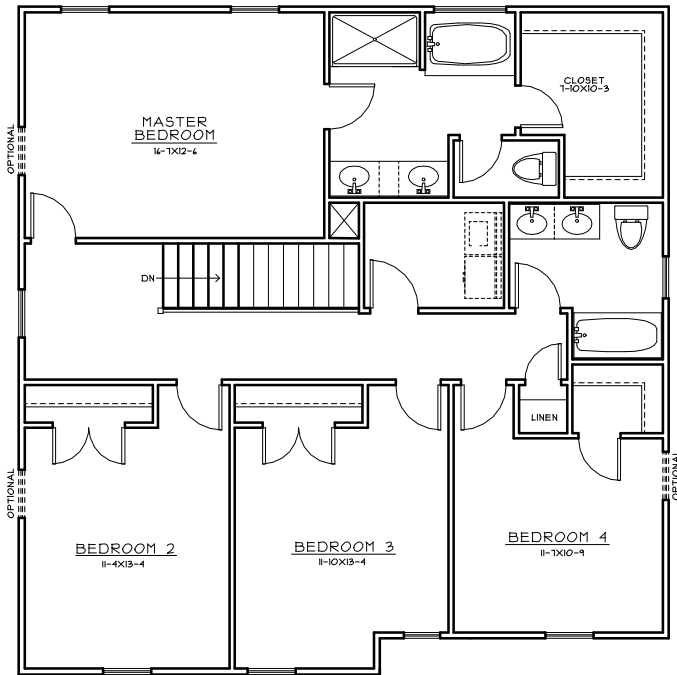
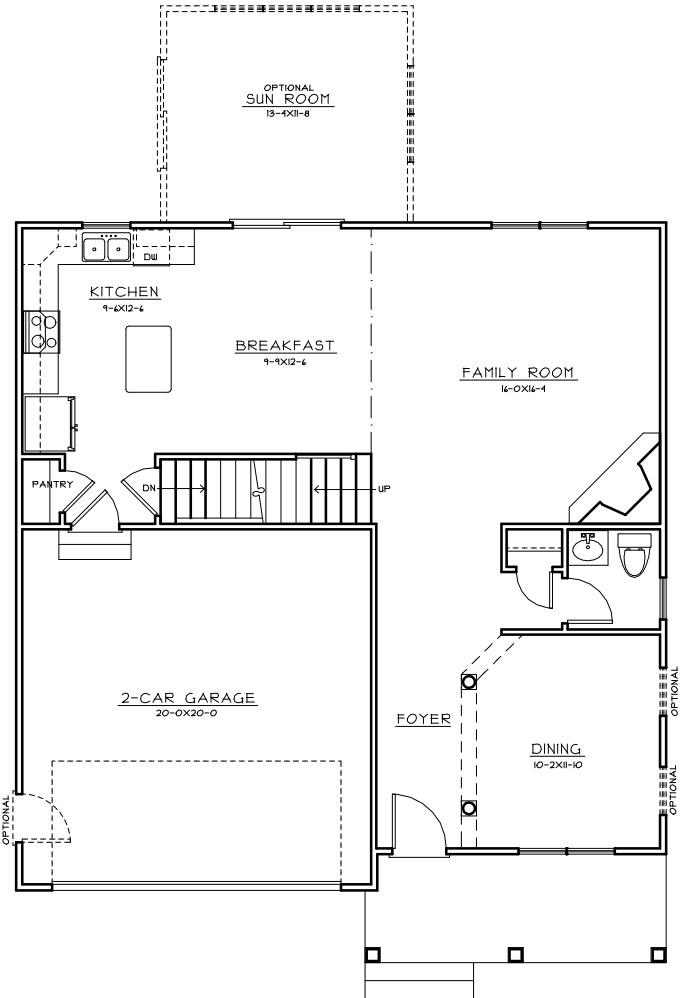
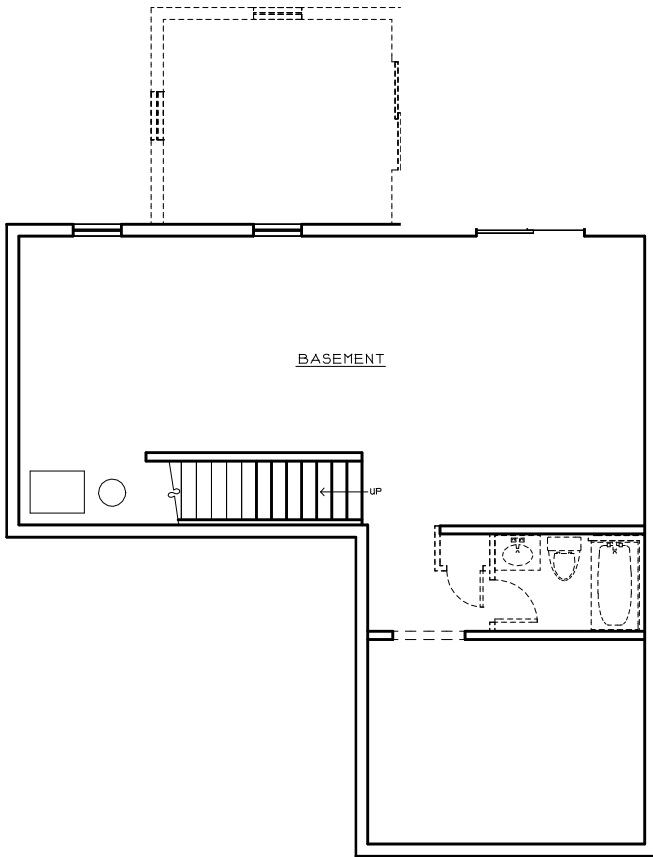




- ❖ Welcoming Covered Front Porch w/ Choice of Textures
- ❖ Up to 5 Bedrooms 3.5 Baths
- ❖ Elegant columns Outline Formal Dining Room
- ❖ Expansive Family Room Opens to Breakfast Nook and Kitchen w/Center Island and Loads of Cabinet Space
- ❖ Owner's Suite Provides Double Closets and Huge Bath Retreat with Double Vanity, Large Soaking Tub and Separate Shower
- ❖ Convenience Provided in Separate Upper Level Laundry Room

Reese



Elevations and floor plans are artist's renderings and accuracy cannot be guaranteed. All room dimensions are approximations only. Plan dimensions and features are subject to change without notice or obligation as a result of actual site conditions, which may dictate variations in style of windows, doors, number of steps and ceilings. Windows, doors and ceilings may vary depending on the options and elevations selected. Floor plans and elevations may also be altered to keep pace with Foundation Homes, Inc. ongoing design improvement program. Some features shown are options available at an additional cost and may not be available in all locations. This brochure is for illustrative purposes only and is not part of a legal contract. Please see Builder Representative for specific details.

